

# **Hebrew / Greek**

# **Theological Lexicon**

## **User Guide**

# Table of Contents

<b>1</b>	<b>INTRODUCTION.....</b>	<b>3</b>
1.1	About This Product.....	3
1.2	Purchase the Product.....	3
<b>2</b>	<b>INSTALLING THE PRODUCT .....</b>	<b>4</b>
<b>3</b>	<b>REGISTRATION.....</b>	<b>4</b>
3.1	Licenses.....	4
3.2	Product Registration .....	5
<b>4</b>	<b>USING THIS PRODUCT WITH BIBLE WITH YOU .....</b>	<b>6</b>
4.1	Activation .....	6
4.2	Deactivation .....	7
4.3	Using the Strong’s Lexicon in Bible With You.....	7
<b>5</b>	<b>USING THIS PRODUCT WITH DEPREADER .....</b>	<b>9</b>
5.1	Activating the Lexicon .....	9
5.2	Searching by the Strong’s Number .....	10
5.3	Searching by the Transliteration .....	11
<b>6</b>	<b>CONTACT AND SUPPORT .....</b>	<b>12</b>
<b>7</b>	<b>COPYRIGHT INFORMATION .....</b>	<b>12</b>

# 1 Introduction

## 1.1 About This Product

*This Hebrew and Greek Lexicon* is a database plug-in that may be used with **Bible With You** reader for Bible translations that supports Strong's numbers for which it provides pop-up definitions or may be explored with GMPSOFT's **DEPReader** dictionary program.

The Lexicon includes the Hebrew-Aramaic and Greek Transliterated Dictionaries with definitions of the original Hebrew and Greek words – the languages in which the Bible has been written.

## 1.2 Purchase the Product

Purchase from: <http://www.gmpsoft.com>

- Go to **Products** page
- Find the product you desire
- Click on **BUY** and follow the instructions

For more information about GMPSOFT products and services, visit us at:  
<http://www.gmpsoft.com>.

## 2 Installing the Product

1. Download and install this product on your device:
  - Install in the RAM or on a memory card

For help with the downloading and the installation, please, read the FAQ section at GMPSoft's website:  
[www.gmpsoft.com](http://www.gmpsoft.com)

**Important:** This product is a plug-in for GMPSoft's **DEPReader** dictionary program and for **Bible With You** reader for Bible translations that have Strong's numbers in the text.

## 3 Registration

**Important:** This product may be used with **DEPReader** dictionary program included in the package or with **Bible With You** reader for Bible translations that have the Strong's numbers implemented in the text. The instructions for registration are the same for both applications.

### 3.1 Licenses

GMPSoft offers the following licenses for using its products:

- 1. Trial License** – Includes all the functionality of the **Standard License** plus indication that the product needs to be registered.
- 2. Standard License** – Indicates that you have successfully licensed a GMPSoft's product.
- 3. Limited License** –Indicates that you have availed of the opportunity for one limited license for a GMPSoft's product. The **Limited License** is free.
- 4. Free License** – Indicates that you have licensed a free GMPSoft's product.

## 3.2 Product Registration

This fully functioning product can be registered with the help of **PADUnlock** file (**PAIm Database Unlock System**). **PADUnlock** is a standard database file (.pdb) containing your registration information for each of the products you have purchased. You receive your **PADUnlock** file after you order a License for a GMPSoft product and register it in our system database.

### 1. Get your **PADUnlock**:

- Follow the Unlock Key link in the GMPSoft Sales Confirmation email you have received after the purchase.
- Click on **GET IT** link in your **Product Info** page.
- Save the file on your PC

### 2. Install PADUnlock

- Install **PADUnlock** database in your device's RAM or on the expansion card.

### 3. Go to the **Registration** form:

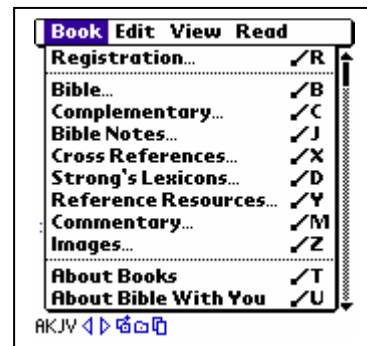
- Launch a GMPSoft product
- Tap on the **Headline** bar or the **Menu** button to display the form menu
- Tap on **Book**
- Tap on **Registration**

Or

- Draw the *Graffiti Menu Command stroke* ✓ and the letter **R** on the silkscreen

Or

- Tap on the **Register** button in the trial reminder form

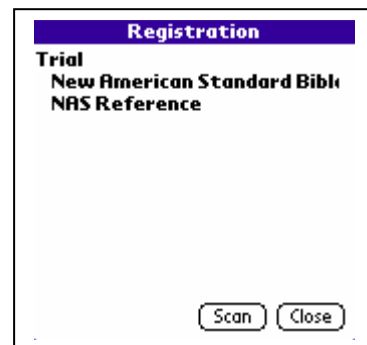


### 4. Apply your **PADUnlock** registration information:

- Tap on the **Scan** button

GMPSoft products support **PADUnlock** Key protocol and use it to automatically register your products.

**Note:** The *Trial reminder* form will still appear if there is even one product with a Trial License state.



## 4 Using This Product With Bible With You

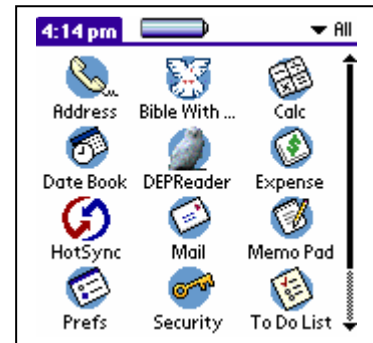
### 4.1 Activation

**Important:** The Hebrew/Greek lexicon requires **Bible With You** reader for Bible translations that have the Strong's numbers implemented in the text – *Bible With You (KJVwS)*, *Bible With You (NASBwS)*, etc.

Get **Bible With You** for Bible translations with Strong's numbers:  
<http://www.biblewithyou.com>

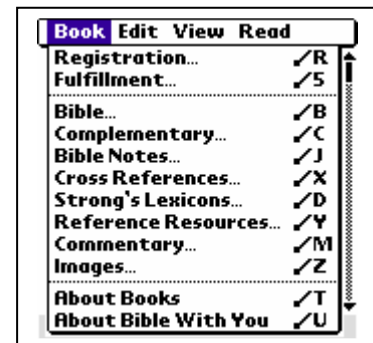
#### 1. Launch **Bible With You**:

- Locate the **Bible With You** icon in the Palm Applications Launcher
- Tap on the icon to launch the reader



#### 2. Choose **Strong's Lexicons...** from the **Book** menu:

- Tap on **Bible** bar or **Menu** button to display the form menu
  - Tap on **Book**
  - Tap on **Strong's Lexicons...**
- Or**
- Draw the *Graffiti Menu Command stroke* ✓ and the letter **D** on the silkscreen



#### 3. Activating the lexicon:

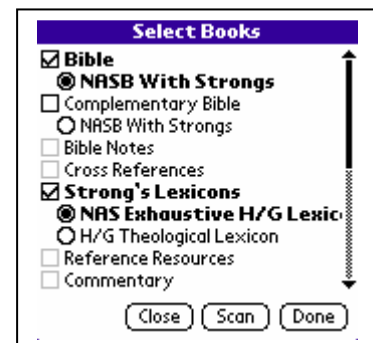
- Enable the check box before **Strong's Lexicons**
- Select the desired lexicon

**Note:** If after installing this product, its check box is not active, tap on **Scan** button to refresh information about installed databases.

**Bible With You** stores cache information about the available databases. This speeds the operation when you use memory cards.

It is not necessary to scan each time. Scan when you:

- Installed new database(s)
- Deleted database(s)
- Transferred database(s) from handheld RAM to memory card or vice versa
- Moved database(s) in another folder of the memory card



## 4.2 Deactivation

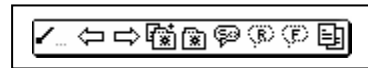
1. Choose **Strong's Lexicons...** from the **Book** menu:
  - Tap on **Bible** bar or **Menu button** to display the form menu
  - Tap on **Book**
  - Tap on **Strong's Lexicons...****Or**
  - Draw the *Graffiti Menu Command stroke* ✓ and the letter **D** on the silkscreen
2. Deactivate the lexicon:
  - Disable the check box before **Strong's Lexicons**

## 4.3 Using the Strong's Lexicon in Bible With You

This Lexicon provides the Strong's definitions of the original Hebrew/Greek words in the Bible.

**Important:** This lexicon requires **Bible With You** for Bible translations that have Strong's numbers implemented in the text: *Bible With You (NASBwS)*, *Bible With You (KJVwS)*, etc.

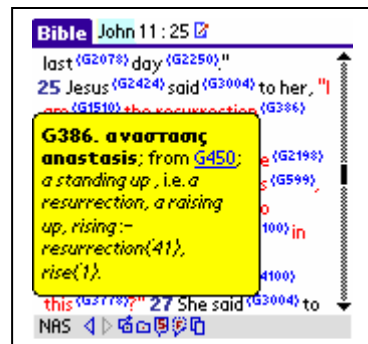
1. Select *Show/Hide Strong's*
  - Adjust **Show Strong's Numbers/Marks** in **Preferences** form (see the User Guide of Bible With You)**Or**
  - Draw the *Graffiti Menu Command stroke* to display the command toolbar
  - Tap on the **S** icon to alternatively display **Strong's numbers** in the text, show only **Marks** (braces) or hide Strong's numbers.



2. Show a Strong's definition
  - Tap on a Strong's number in the text indicated by braces in superscript

**Note:** A pop-up window with information about the original Hebrew or Greek word will appear.

Some definitions will include the Strong's numbers from which the particular word derives.



3. View a related Strong's number referred in the definition

- Tap on it in the definition text in the pop-up

**Note:** The definition will be displayed in a new pop-up window.

4. Close a pop-up window

- Tap anywhere on the screen



## 5 Using This Product With DEPReader

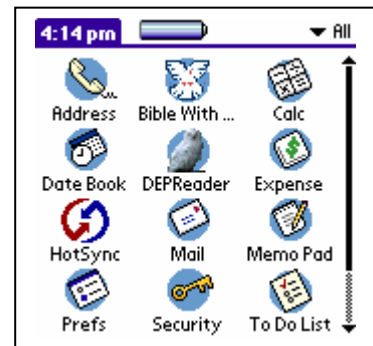
**Dictionary and Encyclopedia Personal Reader** is a dictionary program that supports GMPSoft and RefToGo dictionaries, lexicons and reference material such as stats and lists. It provides several search mechanisms besides the standard one that guarantee you'll find a match – Spelling search, Phonetic search and Crossword search.

Get **DEPReader** compatible dictionaries and reference resources from:  
<http://www.depreader.com>

### 5.1 Activating the Lexicon

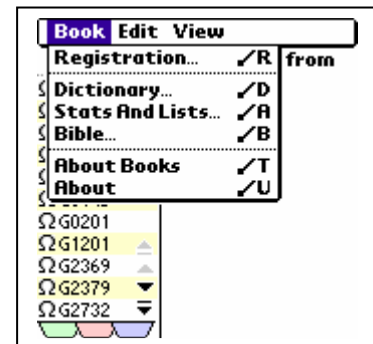
#### 1. Launch **DEPReader**:

- Locate the **DEPReader** icon in the Palm Applications Launcher
- Tap on the icon to launch the application



#### 2. Choose **Dictionary** from the **Book** menu:

- Tap on **DEPR** bar or **Menu button** to display the form menu
  - Tap on **Book**
  - Tap on **Dictionary**
- Or**
- Draw the *Graffiti Menu Command stroke* ✓ and the letter **D** on the silkscreen

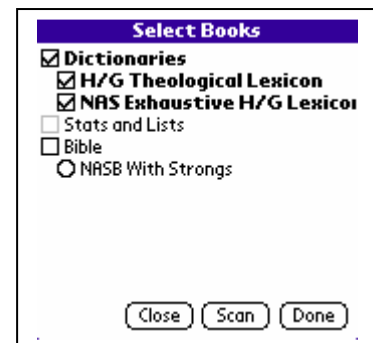


#### 3. Activate the lexicon:

- Enable the check box before **Dictionaries**
- Tap on a book in the list

**Note:** If after installing this product, its check box is not active, tap on **Scan** button to refresh information about installed databases.

**DEPReader** stores cache information about the available databases. This speeds the operation when you use memory cards.



It is not necessary to scan each time. Scan when you:

- Installed new database(s)
- Deleted database(s)
- Transferred database(s) from handheld RAM to memory card or vice versa
- Moved database(s) in another folder of the memory card

## 5.2 Searching by the Strong's Number

**DEPReader** allows you to search this lexicon by the Strong's numbers or by the English transliteration of the words indicated by a particular Strong's number.

The format of the Strong's numbers in this lexicon is as follows:

**H0001** – where **H** indicates it is for an original Hebrew word

**G1126** – where **G** indicates it is for an original Greek word

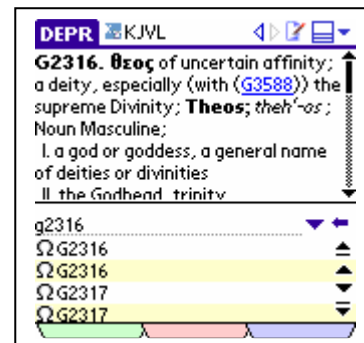
Some Strong's numbers have modifications, indicated by a letter at the end:

**H2425a** and **H2425b**

1. Enter a Strong's number in the *Lookup field*
  - Use the Silkscreen Graffiti area or the system keyboard

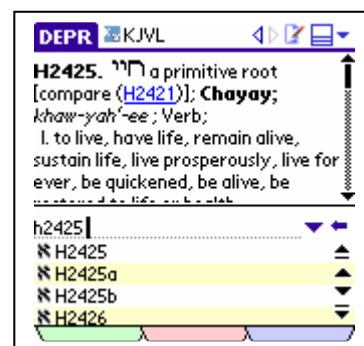
Enter the Strong's number according to the format given above.

2. Display the Strong's definition
  - Tap on the Strong's number in the search result



3. Search for a modification of a Strong's number
  - Enter a Strong's number as described in step. 1
  - Enter a space at the end

If the Strong's number has modifications they will appear on top of the search result.



## 5.3 Searching by the Transliteration

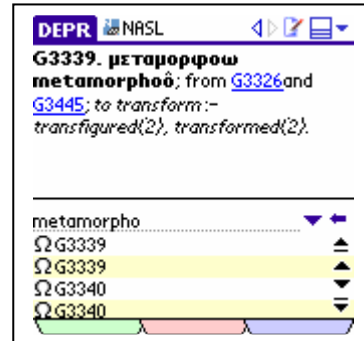
**DEPReader** allows you to search this lexicon by the English transliteration of the original Hebrew or Greek words.

A transliteration of a Hebrew/Greek word is the English recording of how it sounds. For example, the Strong's number **G3339** stands for the old Greek word **μεταμορφω** which is transliterated as **metamorphoḗ**.

1. Enter the transliterated word in the *Lookup field*
  - Use the Silkscreen Graffiti area or the system keyboard

The *Word List window* will be positioned on the Strong's number which matches your search criteria.

2. Look-up a Strong's number from the result
  - Tap on the Strong's number displayed on top of the search result
3. Look-up other Strong's numbers from the result
  - Tap on another Strong's number in the results



## **6 Contact and Support**

### **Technical Support**

In order to report problems or ask questions with regard to the software, contact our Technical Support Department:

E-mail: [support@gmpsoft.com](mailto:support@gmpsoft.com)

### **Sales**

In order to obtain general information or product and sales related information, contact our Sales Department:

E-mail: [sales@gmpsoft.com](mailto:sales@gmpsoft.com)

Sales points: [www.gmpsoft.com](http://www.gmpsoft.com)

### **Partnership and Business Development**

In order to enquire about partnering and B2B development, contact our Management Department:

E-mail: [ceo@gmpsoft.com](mailto:ceo@gmpsoft.com)

## **7 Copyright Information**

This product and the algorithms used are property of GMPSOft. All rights reserved, 2002-2008.